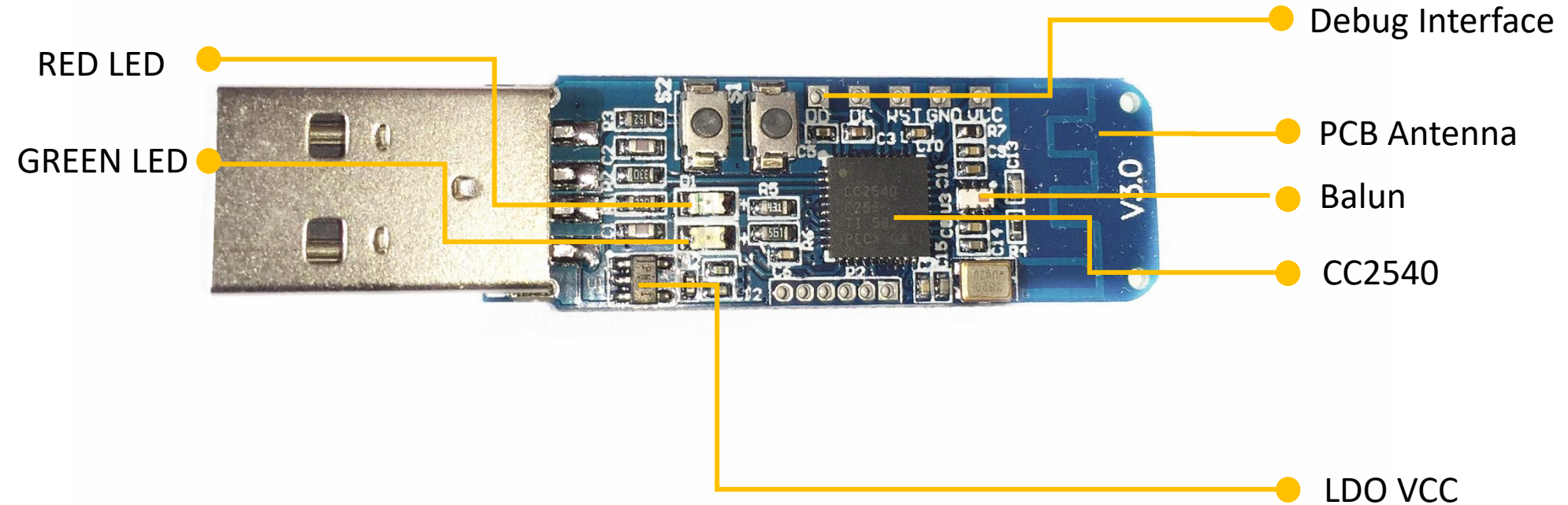
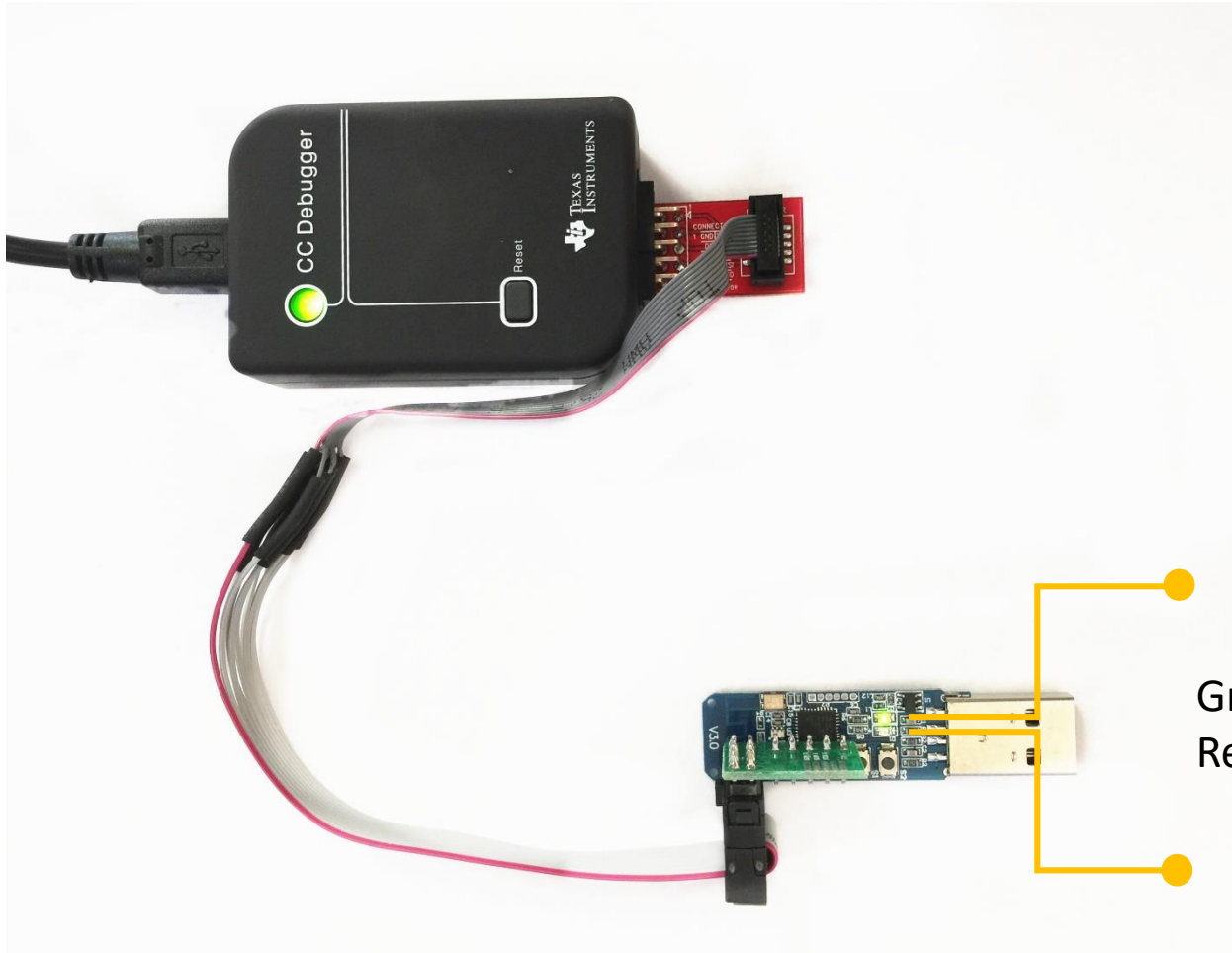


The dongle comes preprogrammed as either a BLE HOST DEVICE work with BLE monitor/Btool, OR a packet sniffer, it can be re-programmed.



Reference: <http://www.ti.com/tool/cc2540emk-usb>

The dongle comes preprogrammed as either a BLE HOST DEVICE work with BLE monitor/Btool, OR a packet sniffer, it can be reprogrammed.

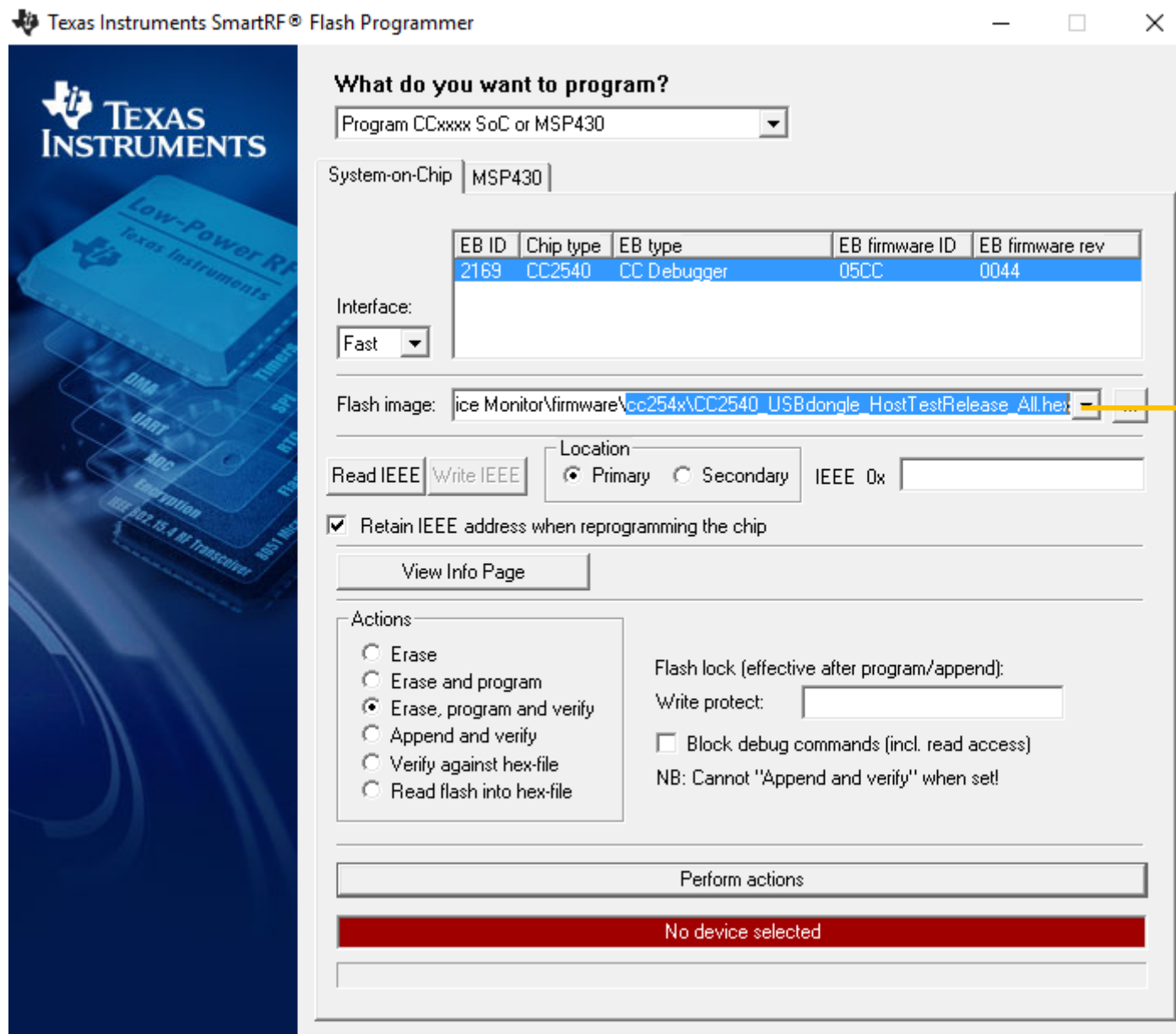


Green LED on: Configured work with Packet sniffer
Red LED on: Configured work with BLE device monitor/Btool

Pay attention to red stripe pin position

Reference: <http://www.ti.com/lit/ug/swru342/swru342.pdf>

The dongle comes preprogrammed as either a BLE HOST DEVICE work with BLE monitor/Btool, OR a packet sniffer, it can be reprogrammed.

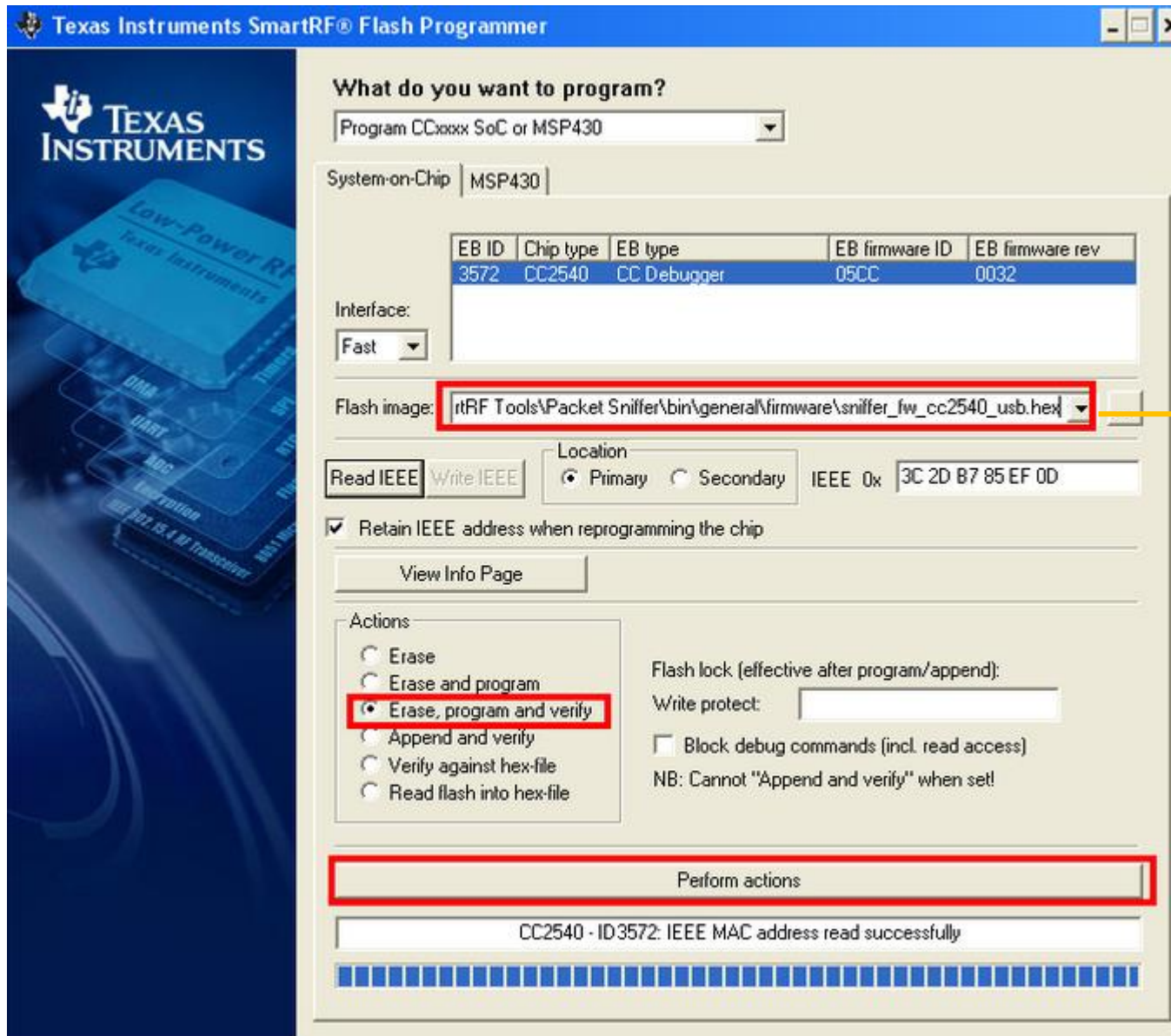


CC2540_USBdongle_HostTestRelease_All.hex
Programmed to work with BLE device monitor/Btool

USB dongle driver download:
<http://www.ti.com/tool/ble-stack>

Reference: http://processors.wiki.ti.com/index.php/BLE_Device_Monitor_User_Guide

The dongle comes preprogrammed as either a BLE HOST DEVICE work with BLE monitor/Btool, OR a packet sniffer, it can be reprogrammed.



sniffer_fw_cc2540_usb.hex
Programmed to work with Packet sniffer

Packet sniffer driver download:
<http://www.ti.com/tool/packet-sniffer>

Reference: http://processors.wiki.ti.com/index.php/BLE_sniffer_guide